

LOW-VOC SOLVENT CEMENTS

Continued

Homer™ 828L Gray - heavy body PVC solvent cement

Code	Description	Qty.
55960	½ pt.	24
55961	1 pt.	12
55963	1 qt.	12
55964	1 gal.	4

Normal setting for use on PVC pipe and fittings for Schedule 40 and Schedule 80 through 12".*

See recommended use chart on page 8



Charlie™ 412L Orange - regular body CPVC solvent cement

Code	Description	Qty.
55956	¼ pt.	24
55957	½ pt.	24

Fast setting for use on CPVC pipe and fittings Schedule 40 through 2". Not recommended for use on Schedule 80 pipe.*

See recommended use chart on page 8



Dura-Gold™ 627L Gold - medium body CPVC solvent cement

Code	Description	Qty.
55992	½ pt.	24
55998	1 pt.	12

One Step Medium setting for use on CPVC pipe and fittings including FlowGuard Gold® through, 2" for Schedule 40 & 1 ¼" for Schedule 80.* No primer needed.**

See recommended use chart on page 8
**FlowGuard Gold is a licensed trademark of The Lubrizol Corporation



Heavy Duty 811L Orange - heavy body CPVC solvent cement

Code	Description	Qty.
55967	1 pt.	12
55968	1 qt.	12
55971	1 gal.	4

Medium setting for use on CPVC pipe and fittings for Schedule 40 and 80 through 12".*

See recommended use chart on page 8



John™ 647L Black - medium body ABS solvent cement

Code	Description	Qty.
55938	¼ pt.	24
55940	½ pt.	24
55942	1 pt.	12
55944	1 qt.	12

Medium setting for use on ABS pipe and fittings through 6" for Schedule 40 and 80.

See recommended use chart on page 8



Mike™ 425L Amber - regular body multi-purpose solvent cement

Code	Description	Qty.
55969	¼ pt.	24
55970	½ pt.	24
55973	1 pt.	12
55974	1 qt.	12

Fast Setting for use on PVC, CPVC and ABS pipes and fittings Schedule 40. Use on pressure pipe system through 2" and non-pressure pipe system through 6". Not recommended for use on Schedule 80 pipe.

See recommended use chart on page 8



Joins per solvent cement container chart

Use as a guideline only. Actual usage will vary due to installation conditions. These estimates are not to be used to restrict the liberal application recommended proper for pipe joining.

Pipe Diameter	1/2 in	3/4 in	1 in	1 1/4 in	1 1/2 in	2 in	2 1/2 in	3 in	4 in	5 in	6 in	8 in	10 in	12 in
Joins per Pint	130	80	70	50	35	20	17	15	10	8	-	-	-	-
Joins per Quart	260	160	140	100	70	40	34	30	20	16	8	3	-	-
Joins per Gallon	1,040	640	560	400	280	160	136	120	80	64	24	12	10	6

*For thinner wall pipe applications, please contact RectorSeal.
Max VOC per SCAQMD 1168/316A or BAAQMD Method 40: 510 g/L.



PRIMERS & CLEANERS

Jim™ PR-1L

○ Purple - Low-VOC PVC, CPVC hi-etch primer

Code	Description	Qty.
55910	¼ pt.	24
55912	½ pt.	24
55914	1 pt.	12
55918	1 qt.	12
55920	1 gal.	4

Fast acting, superior bonding primer for use on PVC and CPVC pipe and fittings Schedule 40 and Schedule 80.*

See recommended use chart on page 8



Clear PR-2L

○ Clear - Low-VOC PVC, CPVC hi-etch primer

Code	Description	Qty.
55972	1 pt.	12
55981	1 qt.	12
55982	1 gal.	4

Fast acting, superior bonding primer for use on PVC and CPVC pipe and fittings Schedule 40 and Schedule 80.*

See recommended use chart on page 8



Also available in gallon can.



Bill™ PR-3

○ Clear - PVC, CPVC Hi-etch primer

Code	Description	Qty.
55701	¼ pt.	24
55703	½ pt.	24
55705	1 pt.	12
55707	1 qt.	12
55709	1 gal.	4

Fast acting primer for use on PVC and CPVC pipe and fittings Schedule 40 and Schedule 80.* Etches and penetrates the surface to increase body strength.

See recommended use chart on page 8



Also available in gallon can.



Sam™ CL-3L

○ Clear - Low-VOC multi-purpose cleaner

Code	Description	Qty.
55929	¼ pt.	24
55930	½ pt.	24
55932	1 pt.	12
55934	1 qt.	12
55936	1 gal.	4

Fast acting for use on PVC, CPVC and ABS pipe and fittings Schedule 40 and Schedule 80.*

See recommended use chart on page 8



Applicator

PVC solvent cement roller

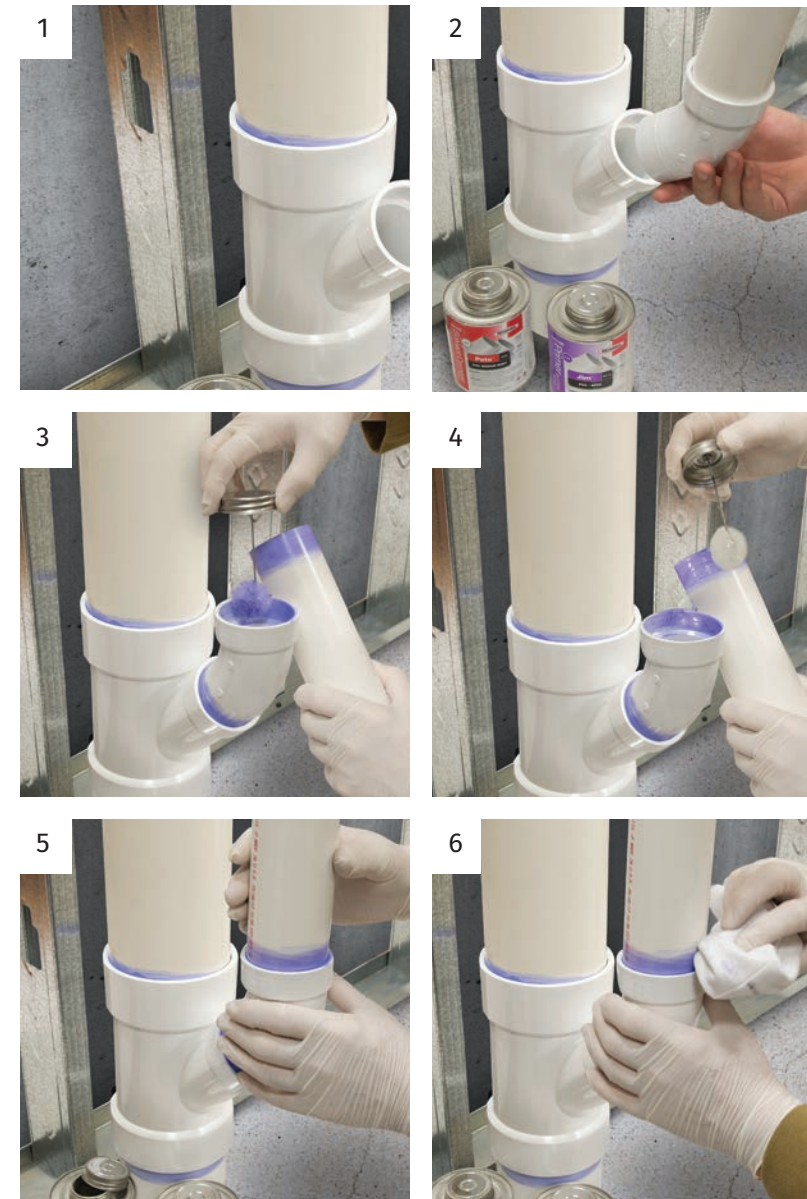
Code	Description	Qty.
19073	Roller Applicator	4

Quicker application for larger diameter pipe sizes. Fits both wide mouth can and regular gallon cans.



Made in the U.S.A.

SOLVENT CEMENT WELDING INSTRUCTIONS



1. Needed to make weld - Pipe fittings, primer, solvent and deburring tool.

2. Before welding, dry fit the assembly, making sure the pipe and fittings are set snug and correctly positioned. Apply cleaner to both surfaces to be welded.

3. Apply primer to the outside of the male connection and to the inside of the female socket to etch the surfaces to be welded. (For ABS pipe use a clear cleaner, not a primer.)

4. Apply cement liberally over the primer on the male connection to the depth of the socket. Coat entire surface. Apply a thin coat of cement on the inside of the socket, being careful not to puddle cement that can weaken the joint. If cement dries, recoat both surfaces before welding.

5. Once cement is applied, parts must be assembled quickly. Push pipe or fitting into socket with a quarter turn motion until you feel it bottom out. Hold the weld together for 30 seconds to prevent push out. Hold longer as needed for colder weather application.

6. Wipe off excess solvent to finish weld. Allow 15 minutes to set and 2 hours to cure. Both size of pipe and temperature will affect actual cure times.