

# Q314 Standing Pilot Burner



**Non primary-aerated, target type pilot burner for standing pilot applications. Used with Q309, Q340, Q340 thermocouples or Q313 thermopiles.**

- Variety of mounting brackets available
- Single tip style
- Variety of tip directions to provide desired flame pattern.
- Interchangeable, color-coded orifices can be ordered to convert between natural and LP gas

**Application:** Pilot Burner for Standing Pilot Applications

**Aeration:** Non-primary

**Compression Fitting Size:** 1/4 in.

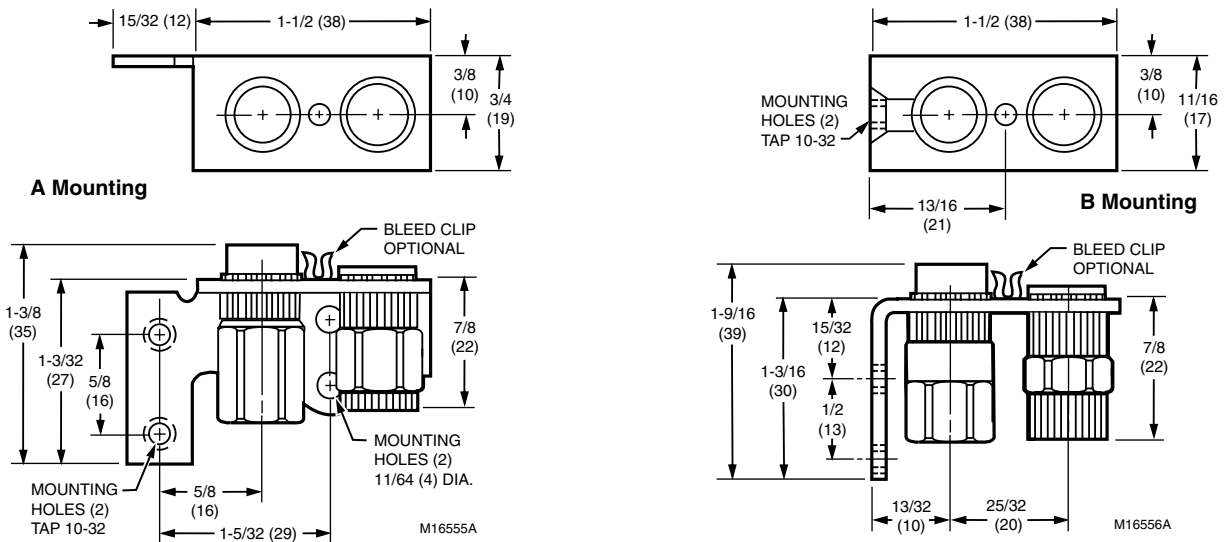
**Compression Fitting Length:** 0.65 in.

**Tip Style:** Target

**Approvals:** CSA International: 112395

| Material Number | Direction of Front Tip | Type of Gas | Mounting                                    | Orifice                                        | Includes                                                                                               |
|-----------------|------------------------|-------------|---------------------------------------------|------------------------------------------------|--------------------------------------------------------------------------------------------------------|
| Q314A3513/U     | (F) Front              | Natural     | Bracket Style A                             | BCR-18 (0.018 in.)                             |                                                                                                        |
| Q314A3547/U     | (L) Left               | Natural     | Bracket Style A                             | BCR-18 (0.018 in.)                             |                                                                                                        |
| Q314A4586/U     | (F) Front              | Natural, LP | Bracket Style B; Includes Bracket A adapter | BCR-18 (0.018 in.) / BBR-10 (0.010 in.) Packed | BCR18 and BBR-10 orifices. Special mounting bracket with screws to convert "B" bracket to "A" bracket. |
| Q314A6094/U     | (L) Left               | Natural, LP | Bracket Style B; Includes Bracket A adapter | BCR-18 (0.018 in.) / BBR-10 (0.010 in.) Packed | BCR18 and BBR-10 orifices. Special mounting bracket with screws to convert "B" bracket to "A" bracket. |
| Q314A6102/U     | (K) Right              | Natural, LP | Bracket Style B; Includes Bracket A adapter | BCR-18 (0.018 in.) / BBR-10 (0.010 in.) Packed | BCR18 and BBR-10 orifices. Special mounting bracket with screws to convert "B" bracket to "A" bracket. |

Dimensions in inches (millimeters)



Residential Combustion Control