

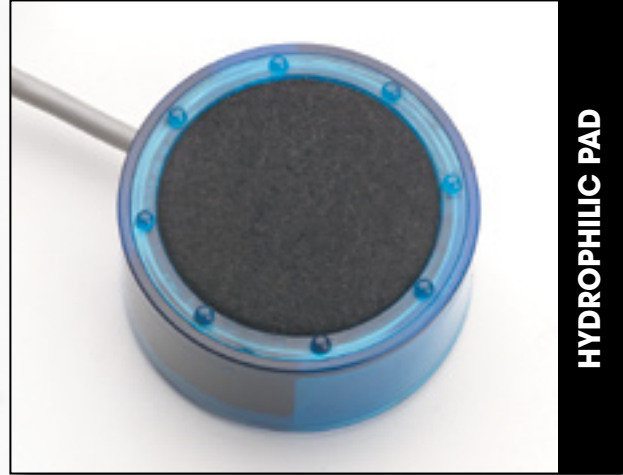
Wet Switch Flood Detector

WHAT IS THE WET SWITCH?

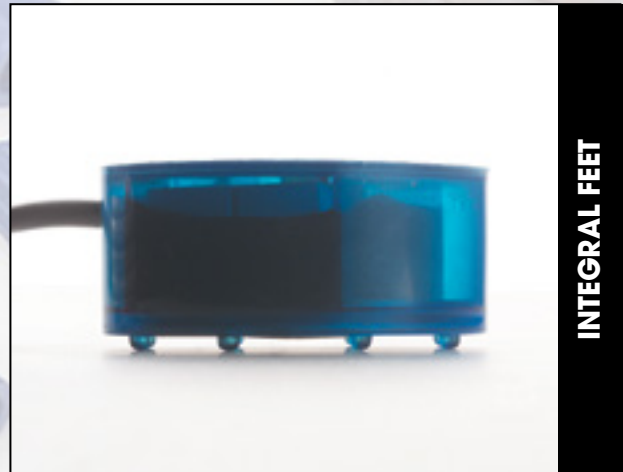
The Wet Switch is a solid state device designed to detect the presence of condensate water overflow. The Wet Switch is placed into the secondary drain pan — a normally dry pan. If the primary drain pan fails, condensate water will overflow into the secondary drain pan. Upon sensing moisture, the Wet Switch will turn the system off (typically the cause of the condensing water) to help prevent damage to carpets, walls, woodwork, ceilings, and other property.

- Hydrophilic Pad
- Integral Feet
- Stainless Steel Sensor Array
- Solid State Electronics
- Epoxy Encapsulated Electronics
- Double Throw Relay
- Standard 24VAC control
- Multiple Unit Connectivity

The Wet Switch is designed to interrupt the operation of cooling systems. However, it is a water activated switch and can be used in a variety of other applications.



HYDROPHILIC PAD



INTEGRAL FEET



STAINLESS STEEL SENSORS

HYDROPHILIC PAD

A high tech polymer fiber quickly draws water into the sensor array using proven capillary technology.

INTEGRAL FEET

Integral feet raise the hydrophilic pad and sensor array off the drain pan slightly to prevent nuisance tripping and pan corrosion (metal pans only) from interfering with the sensor array.

STAINLESS STEEL SENSOR ARRAY

A high tech array of multiple stainless steel sensors detects even a minimal amount of water drawn into the hydrophilic pad.

COMPACT PACKAGE

This technology is packed into a 3-5/8" diameter by 1-1/4" high cylinder. Furnished complete with 5-conductor 22AWG stranded cable, 6' long.

DOUBLE THROW RELAY

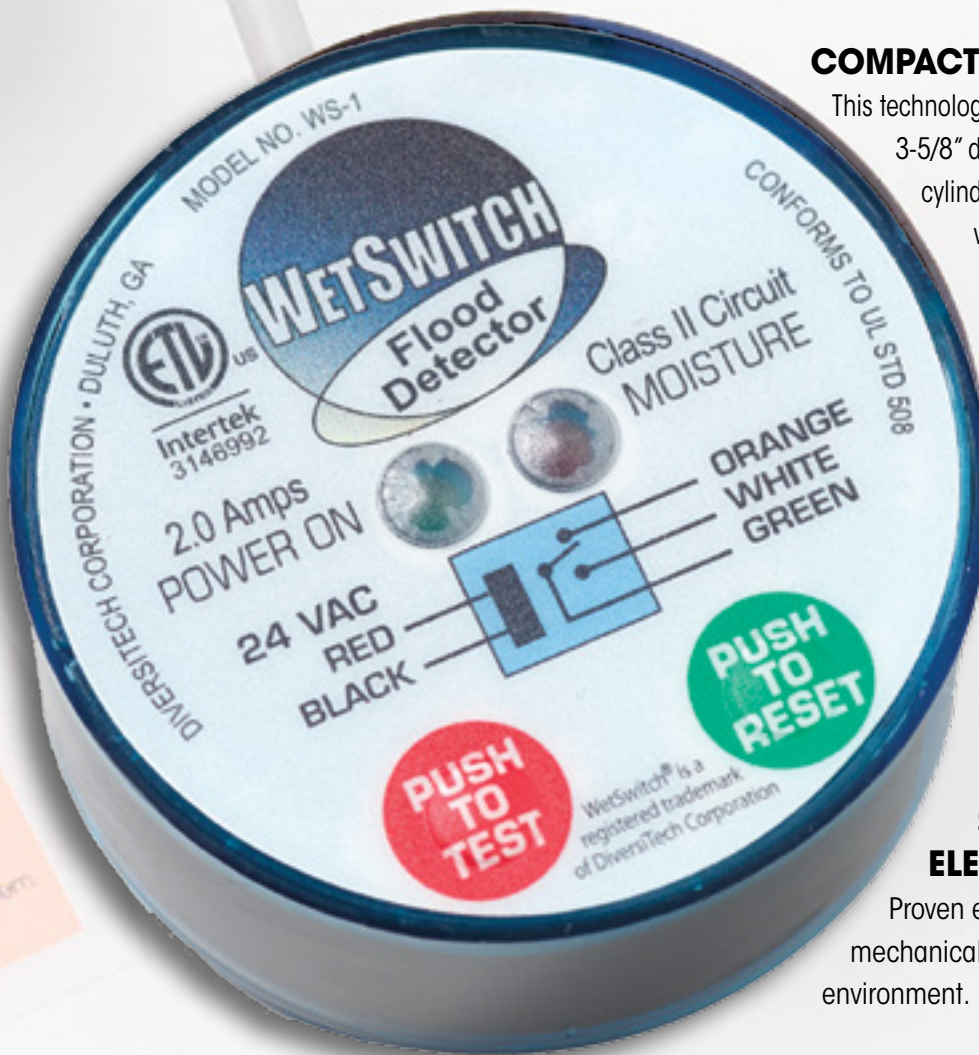
Allows for wiring to interrupt system and to sound an alarm (by others) when moisture is detected.

SOLID STATE ELECTRONICS

Proven electronics prevent mechanical failure in an aggressive operating environment.

MULTIPLE UNIT CONNECTIVITY

Multiple unit connectivity allows for multiple Wet Switches to be connected in series to adequately cover large drain pan areas.



installer:
Put large label
on access panel
of system

Put smaller label
next to circuit
breaker for system.

CONDENSATE PUMPS cont'd

CP-MINI-L



DiversiTech's CP-MINI-L Mini Split Condensate Pump is a quiet, super compact, and feature rich pump that fits almost anywhere. Handles multiple voltages. Pump fits easily in most line set covers.



CP-MINI-L

CATALOG NO.	DESCRIPTION	UOM	ORDER MULTIPLE
CP-MINI-L	Low Profile Mini-Split Pump 115V-240V 50/60 Hz EA	EA	6

Mini-Split Pumps

DiversiTech's Mini-Split Condensate Pump is a quiet, super compact, and feature rich pump that fits almost anywhere. Compatible with all brands of mini-split units. Provides 24' of lift with 6' suction lift. Pump fits easily in most line set covers and includes all needed accessories. Available in 115V and 230V versions.



CP-M115

CATALOG NO.	DESCRIPTION	UOM	ORDER MULTIPLE
CP-M115	Mini-Split Condensate Pump, 115V	EA	10
CP-M230	Mini-Split Condensate Pump, 230V	EA	10

CONDENSATE DRAIN LINE SWITCHES

PAN MOUNTED SWITCHES

Wet Switch Flood Detector

A solid state control designed to help prevent flooding, damage to carpets, walls, furniture, ceilings, etc. Now has a built in test and reset button for easier installation. Turns system off when detecting moisture due to condensate or drain leaks. One or two drops will cause Wet Switch to turn off a unit, alerting a serviceman to a moisture problem. A lit LED indicates the Wet Switch is activated and has turned the unit off. Reset simply by drying the absorbent pad with a paper towel and pressing the reset switch. Connects to 24 VAC. More than one unit may be connected to a system. 2 amp contact rating. Simple 5 wire installation. Sales displays available. ETL Listed File Number 3146992. UL508 Approved.

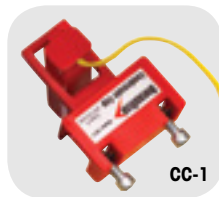


WS-1

CATALOG NO.	DESCRIPTION	UOM	ORDER MULTIPLE
WS-1	Wet Switch Flood Detector	EA	1

Condensate Cop™

Condensate Cop™ is a unique clamp on float switch intended for HVAC drain pan installation. The Condensate Cop™ features a large over clamping area that fits easily over the edge of all types of drain pans; including formed plastic and galvanized sheet metal. A separate float/probe assembly swivels to accommodate drain pans having sloped sides. The swivel action allows the installer to position the float switch for best operation and then clamp it into place. The probe features an inlet grill which prevents the float from being blocked or damaged by insulation or other debris. Sealed inside the probe is a magnetically actuated normally closed switch. The switch opens when rising water presents a potential flooding condition. Two wire connection for easy hook up to a thermostat "Y" (compressor) circuit. Provided complete with 5' (1.5 meter) leads, wire nuts, and clamping screws. Small size, 24V/1.5 amp NC reed switch. ETL Listed File Number 3166285. UL508 Approved.



CC-1

CATALOG NO.	DESCRIPTION	UOM	ORDER MULTIPLE
CC-1	Condensate Cop™ Drain Pan Switch	EA	12

CS1200 AC Shutoff Switch

The CS1200 is a fast installing, reliable, condensate overflow detection pan switch. Featuring a unique universal pan mount design to assure accurate detection in metal or plastic secondary drain pans. UL508 Approved.



CS1200

CATALOG NO.	DESCRIPTION	UOM	ORDER MULTIPLE
CS1200	CS1200 AC Shutoff Switch	EA	12

CS-3 Condensate Pan Switch

The CS-3 is a clip-on pan switch that use a magnetic reed switch for condensate overflow protection.



CS-3

CATALOG NO.	DESCRIPTION	UOM	ORDER MULTIPLE
CS-3	Condensate Switch – Clip	EA	12

Pipe Mounted Switches

DiversiTech Flood Prevention Switches are simple to install, easy to service and extremely reliable. As water level in the auxiliary or main drain pipe rises due to a clogged air conditioning condensate drain, the switch shuts off the system - thus preventing water from overflowing and causing damage to doors, walls and ceilings. At the heart of the switch is a durable yet precise magnetic reed switch. Constructed of materials that will not rust or stick, the switch operates smoothly every time. UL508 Approved.



CS-1

CS-2

CATALOG NO.	DESCRIPTION	UOM	ORDER MULTIPLE
CS-1	Condensate Switch – Tee	EA	12
CS-2	Condensate Switch – Elbow	EA	12

Universal Alarm

A universal low voltage alarm that can indicate possible system trouble. Use with the Wet Switch, SOS, Condensate Cop, CP 22 (all types) and all float switches on 24VAC control circuits. If an alarm condition exists, the homeowner can turn the alarm off with a "silence" button until service is obtained, however a red trouble LED will remain lit. Also features: easy 2 wire connection, label to print contractor information, and low current draw. Actuates at greater than 18V to prevent any false alarms due to low voltage. Includes 2 wire nuts, a sheet metal screw, and double sided tape for convenient installation options. Also includes instructions for wiring normally open switch systems (for the CP 22 or other condensate pumps).



UA-1

CATALOG NO.	DESCRIPTION	UOM	ORDER MULTIPLE
UA-1	Universal Alarm for 24VAC	EA	12