

## TIME DELAY RELAYS



### Lockout Protection Relay



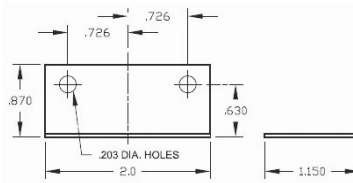
Upon application of power with the safety switches closed, the load will energize. If any of the safety switches open for longer than 600 ms, the fault light will come on and the load will stay de-energized regardless of the state of the safety switches. Power must then be removed for 100 ms and safety switches must be closed in order to reenergize the load, upon which the fault light will be off.

PART NO	VOLTAGE RATING (VAC)	ELECTRICAL CONNECTIONS
ICM-220	18-30	1/4 in. Quick Connects

## SEQUENCERS



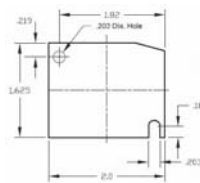
### Sequencer (Angle Bracket w/Two Mounting Holes)



PART NO	HEATER VOLTAGE (V)	CONTACT CONFIG	NUMBER OF POLES	ON TIME POLE 1 (SEC)	ON TIME POLE 2 (SEC)	ON TIME POLE 3 (SEC)	OFF TIME POLE 1 (SEC)	OFF TIME POLE 2 (SEC)	OFF TIME POLE 3 (SEC)	MOTOR FLA @ 120V (A)	MOTOR LRA @ 120V (A)	MOTOR FLA @ 230V (A)	MOTOR LRA @ 230V (A)	RESISTIVE RATING @ 230V (A)	MOTOR FLA @ 460V (A)	MOTOR LRA @ 460V (A)	PILOT DUTY RATING @ 460V (VA)
42-23116-01	24	SPST - NO	1	1-30	—	—	40-90	—	—	Pole 1: 14	Pole 1: 72	Pole 1: 7	Pole 1: 42	Pole 1: 25	Pole 1: 3	Pole 1: 18	Pole 1: 125
42-23116-08	24	DPST - NO	2	10-30	10-30	—	30-60	30-60	—	Pole 1: 14 Pole 2: 14	Pole 1: 72 Pole 2: 72	Pole 1: 7 Pole 2: 7	Pole 1: 42 Pole 2: 42	Pole 1: 25 Pole 2: 25	Pole 1: 3 Pole 2: 3	Pole 1: 18 Pole 2: 18	Pole 1: 125 Pole 2: 125
42-23116-06	24	DPST - NO	2	10-40	30-60	—	90-160	30-60	—	Pole 1: 14 Pole 2: 14	Pole 1: 72 Pole 2: 72	Pole 1: 7 Pole 2: 7	Pole 1: 42 Pole 2: 42	Pole 1: 25 Pole 2: 25	Pole 1: 3 Pole 2: 3	Pole 1: 18 Pole 2: 18	Pole 1: 125 Pole 2: 125
42-23116-07	24	TPST - NO	3	10-30	10-30	10-30	90-150	30-60	30-60	Pole 1: 7 Pole 2: 7 Pole 3: 7	Pole 1: 42 Pole 2: 42 Pole 3: 42	Pole 1: 7 Pole 2: 7 Pole 3: 7	Pole 1: 42 Pole 2: 42 Pole 3: 42	Pole 1: 25 Pole 2: 25 Pole 3: 25	Pole 1: 3 Pole 2: 3 Pole 3: 3	Pole 1: 18 Pole 2: 18 Pole 3: 18	Pole 1: 125 Pole 2: 125 Pole 3: 125
42-23116-09	24	TPST - NO	3	10-30	10-30	10-30	90-150	30-60	30-60	Pole 1: 7 Pole 2: 7 Pole 3: 7	Pole 1: 42 Pole 2: 42 Pole 3: 42	Pole 1: 7 Pole 2: 7 Pole 3: 7	Pole 1: 42 Pole 2: 42 Pole 3: 42	Pole 1: 25 Pole 2: 25 Pole 3: 25	Pole 1: 3 Pole 2: 3 Pole 3: 3	Pole 1: 18 Pole 2: 18 Pole 3: 18	Pole 1: 125 Pole 2: 125 Pole 3: 125



### Sequencers (Flush Mount Plate w/Mounting Hole and Slot)



PART NO	HEATER VOLTAGE (V)	CONTACT CONFIG	NUMBER OF POLES	ON TIME POLE 1 (SEC)	ON TIME POLE 2 (SEC)	OFF TIME POLE 1 (SEC)	OFF TIME POLE 2 (SEC)	MOTOR FLA @ 120V (A)	MOTOR LRA @ 120V (A)	MOTOR FLA @ 230V (A)	MOTOR LRA @ 230V (A)	RESISTIVE RATING @ 230V (A)	MOTOR FLA @ 460V (A)	MOTOR LRA @ 460V (A)	PILOT DUTY RATING @ 460V (VA)
425077	24	SPST - NO	1	1-30	—	30-60	—	Pole 1: 14	Pole 1: 72	Pole 1: 7	Pole 1: 42	Pole 1: 25	Pole 1: 4	Pole 1: 24	Pole 1: 125
425074	24	SPST - NO	1	30-90	—	1-30	—	Pole 1: 14	Pole 1: 72	Pole 1: 7	Pole 1: 42	Pole 1: 25	Pole 1: 4	Pole 1: 24	Pole 1: 125
425072	24	DPST - NO	2	1-20	1-20	40-110	—	Pole 1: 14 Pole 2: 14	Pole 1: 72 Pole 2: 72	Pole 1: 7 Pole 2: 7	Pole 1: 42 Pole 2: 42	Pole 1: 25 Pole 2: 25	Pole 1: 4 Pole 2: 4	Pole 1: 24 Pole 2: 24	Pole 1: 125 Pole 2: 125
425073	24	DPST - NO	2	40-90	40-90	1-30	—	Pole 1: 14 Pole 2: 14	Pole 1: 72 Pole 2: 72	Pole 1: 7 Pole 2: 7	Pole 1: 42 Pole 2: 42	Pole 1: 25 Pole 2: 25	Pole 1: 4 Pole 2: 4	Pole 1: 24 Pole 2: 24	Pole 1: 125 Pole 2: 125
42-25261-19	24	DPST - NO	2	40-90	1-30	40-90	—	Pole 1: 14 Pole 2: 14	Pole 1: 72 Pole 2: 72	Pole 1: 7 Pole 2: 7	Pole 1: 42 Pole 2: 42	Pole 1: 25 Pole 2: 25	Pole 1: 5 Pole 2: 5	Pole 1: 30 Pole 2: 30	Pole 1: 125 Pole 2: 125



### Sequencers (Specialty Bracket Mount)



PART NO	VENDOR	VENDOR PART NO	HEATER VOLTAGE (V)	CONTACT CONFIG	NUMBER OF POLES	ON TIME POLE 1 (SEC)	ON TIME POLE 2 (SEC)	ON TIME POLE 3 (SEC)	ON TIME POLE 4 (SEC)	OFF TIME POLE 1 (SEC)	OFF TIME POLE 2 (SEC)	OFF TIME POLE 3 (SEC)	OFF TIME POLE 4 (SEC)	MOTOR FLA @ 230V (A)	MOTOR LRA @ 230V (A)	RESISTIVE RATING @ 230V (A)
42-19618-86	Honeywell	R8330D1039/U	24	4PST - NO	4	F1-F2 10 min (all on w/in 2 minutes)	T3-T4 10 min (all on w/in 2 minutes)	T5-T6 10 min (all on w/in 2 minutes)	T7-T8 10 min (all on w/in 2 minutes)	F1-F2 (all off w/in 4 minutes)	T3-T4 (all off w/in 4 minutes)	T5-T6 (all off w/in 4 minutes)	T7-T8 (all off w/in 4 minutes)	Pole 1: 6.9 (Inductive)	Pole 1: 41.4 (Inductive)	Pole 2: 25 Pole 3: 25 Pole 4: 25