

Compression Connectors

Specially designed for industrial and building applications.

Type CTL — Copper One-Hole Lugs, Short Barrel

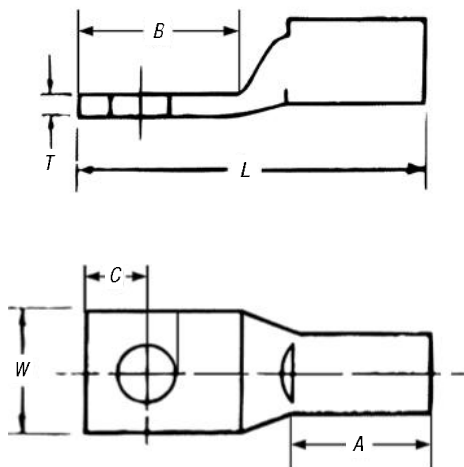


Copper Compression Connectors

- For use with copper conductor: AWG stranded, flexible cable, welding cable and portable cord
- Specially designed for industrial and building applications
- Made of high-conductivity seamless copper tubing
- Tin plated for corrosion resistance
- Specially chamfered barrel for ease of installation
- Color coded for matching die identification
- Can be used for high-voltage application up to 35kV provided proper high-voltage insulation techniques are used
- UL® Listed for AWG conductor when installed with Blackburn®, Burndy®, T&B® or Anderson tools
- Comply with Subpart 111.60-17 of Federal Register's Coast Guard Electrical Engineering Rules and Regulations

Short-Barrel Connectors

- Designed for regular-duty applications
- Ideal for confined areas



CAT. NO.	CONDUCTOR SIZE (CU)	STUD SIZE	DIMENSIONS (IN.)					DIE COLOR CODE	
			A	B	C	L	W		T
CTL8-10	#8 Str.	10	1 ¹³ / ₃₂	1/2	7/32	1 ¹ / ₃₂	3/8	1/16	RED
CTL8-14		1/4	1 ¹³ / ₃₂	19/32	1/4	1 ³ / ₁₆	1/16	1/16	
CTL8-516		3/16	1 ¹³ / ₃₂	5/8	9/32	1 ¹ / ₁₆	9/16	1/16	
CTL6-10	#6 Str. or #6 Weld	10	7/16	17/32	7/32	1 ¹ / ₃₂	7/16	1/16	BLUE
CTL6-14		1/4	7/16	17/32	1/32	1 ¹ / ₃₂	7/16	1/16	
CTL6-516		3/16	7/16	2 ¹ / ₃₂	9/32	1 ¹³ / ₃₂	19/32	1/16	
CTL6-38	#4 Str.	3/8	7/16	2 ¹ / ₃₂	9/32	1 ¹³ / ₃₂	19/32	1/16	GRAY
CTL4-10		10	1/2	19/32	1/4	1 ³ / ₈	1 ¹ / ₃₂	3/32	
CTL4-14		1/4	1/2	19/32	1/4	1 ³ / ₈	1 ¹ / ₃₂	3/32	
CTL4-516	#4 Str.	3/16	1/2	2 ¹ / ₃₂	5/16	1 ¹³ / ₃₂	19/32	1/16	GRAY
CTL4-38		3/8	1/2	2 ¹ / ₃₂	5/16	1 ¹³ / ₃₂	19/32	1/16	
CTL2-14		1/4	19/32	2 ¹ / ₃₂	1/4	1 ¹ / ₂	9/16	3/32	
CTL2-516	3/16	19/32	1/8	3/8	1 ²³ / ₃₂	9/16	3/32		
CTL2-38	3/8	19/32	29/32	3/8	1 ¹ / ₄	9/16	3/32		
CTL2-12	#3 Weld	1/2	19/32	1 ¹ / ₁₆	1/2	1 ²⁹ / ₃₂	3/4	1/16	GREEN
CTL1-14	#1 Str. or #2 Weld	1/4	19/32	2 ¹ / ₃₂	1/4	1 ¹ / ₂	2 ¹ / ₃₂	3/32	
CTL1-516		5/16	19/32	7/8	3/8	1 ²⁹ / ₃₂	2 ¹ / ₃₂	3/32	
CTL1-38		3/8	19/32	29/32	3/32	1 ¹ / ₄	2 ¹ / ₃₂	3/32	
CTL1-12	1/0 Str. or #1 Weld	1/2	19/32	1 ¹ / ₄	1/2	2 ³ / ₃₂	3/4	3/32	PINK
CTL10-516		5/16	1 ¹ / ₁₆	7/8	3/8	1 ¹³ / ₁₆	3/4	1/8	
CTL10-38		3/8	1 ¹ / ₁₆	29/32	3/8	1 ¹ / ₈	3/4	1/8	
CTL10-12	2/0 Str. or 2/0 Weld	1/2	1 ¹ / ₁₆	1 ¹ / ₄	1/2	2 ³ / ₁₆	3/4	1/8	BLACK
CTL20-38		3/8	1 ³ / ₁₆	29/32	3/8	2 ¹ / ₃₂	19/16	1/8	
CTL20-12		1/2	1 ³ / ₁₆	1 ¹ / ₄	1/2	2 ¹ / ₃₂	19/16	1/8	
CTL30-38	3/0 Str. or 2/0 Weld	3/8	1 ³ / ₁₆	29/32	3/8	2 ¹ / ₃₂	29/32	1/8	ORANGE
CTL30-12		1/2	1 ³ / ₁₆	1 ¹ / ₄	1/2	2 ¹ / ₃₂	29/32	1/8	
CTL40-38		3/8	1 ⁵ / ₁₆	29/32	3/8	2 ¹ / ₃₂	1 ³ / ₃₂	1/8	
CTL40-12	4/0 Str. or 3/0 Weld	1/2	1 ⁵ / ₁₆	1 ¹ / ₄	1/2	2 ¹ / ₂	1 ¹ / ₃₂	1/8	PURPLE
CTL250-12		250 kcmil or 4/0 Weld	1/2	1 ¹ / ₃₂	1 ¹ / ₄	1/2	2 ¹ / ₃₂	1 ¹ / ₈	
CTL300-12		300 kcmil	1/2	1 ¹ / ₃₂	1 ¹ / ₄	1/2	2 ⁵ / ₃₂	1 ³ / ₁₆	
CTL350-12	350 kcmil	1/2	1 ¹ / ₃₂	1 ¹ / ₄	1/2	2 ²⁹ / ₃₂	1 ¹ / ₃₂	3/32	RED
CTL400-12	400 kcmil	1/2	1 ¹ / ₃₂	1 ¹ / ₄	1/2	3 ¹ / ₁₆	1 ¹³ / ₃₂	3/32	
CTL400-58		5/8	1 ¹ / ₃₂	1 ³ / ₁₆	5/8	3 ¹ / ₂	1 ¹³ / ₃₂	3/32	
CTL500-12		500 kcmil	1/2	1 ¹³ / ₃₂	1 ¹ / ₄	1/2	3 ¹ / ₄	1 ¹⁹ / ₃₂	1/32
CTL500-58	5/8		1 ¹³ / ₃₂	1 ³ / ₁₆	5/8	3 ³ / ₁₆	1 ¹⁹ / ₃₂	1/32	
CTL600-58	5/8		1 ⁹ / ₁₆	1 ³ / ₁₆	5/8	3 ²³ / ₃₂	1 ³ / ₄	1/32	
CTL750-58	750 kcmil	5/8	1 ¹ / ₂	1 ³ / ₁₆	5/8	3 ²⁹ / ₃₂	1 ²⁹ / ₃₂	1/4	BLACK
CTL1000-58	1,000 kcmil	5/8	1 ³ / ₄	1 ³ / ₁₆	5/8	4 ¹ / ₃₂	2 ¹ / ₄	3/32	