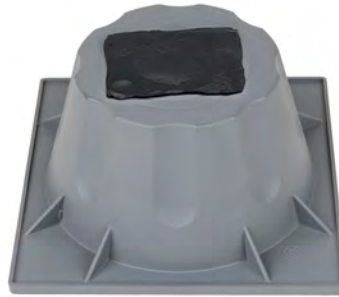




# Heat Pump Risers

Item#	Size	Style	Quantity
200442	3"	1 Piece	48/Box
200552	6"	1 Piece	36/Box
200553	3"	2 Piece	32/Box
200554	6"	2 Piece	16/Box



Heat pump risers add elevation to your condenser, heat pump, or air handler without sacrificing stability



Butyl mastic on the top and bottom eliminates slipping and reduces vibration and noise



Heat pump risers are made of heavy-duty injection molded polypropylene. Thick walls provide reinforcement where needed. They are durable and well suited for outdoor applications

**APPLICATION:** Heat pumps, condensers, air handlers

**USAGE:** Indoor and outdoor use

**PURPOSE:** Heat pump risers add elevation to your heat pump or air handler without sacrificing stability.

**COMPOSITION:** Cambridge Heat Pump Risers are made of heavy-duty injection molded gray polypropylene. Butyl mastic on the top and bottom eliminates slipping and reduces vibration and noise.

**ADVANTAGES:** Cambridge Heat Pump Risers are available in heights of 3" and 6". Thick walls provide reinforcement where needed.

**MAXIMUM UNIFORM LOAD:** Cambridge Heat Pump Risers can withstand a uniformly distributed load of up to 2000 pounds.

**MAXIMUM POINT LOAD:** A single riser can also endure a point load of up to 560 pounds applied to one square inch in the center of the footpad recess.

**DIRECTIONS:** Remove the release liner from the butyl mastic before placement.

**premium.  
industrial.  
products.**