

INTERCHANGEABLE UNIT HUBS



HUB ADAPTER PLATE
(Converts 4" opening to 2½")
S8324



SMALL "RL" OPENING (STANDARD)

SUFFIX	SIZE	MILBANK NO.
WL	1"	A7514
YL	1¼"	A7515
ZL	1½"	A7516
DL	2"	A7517
EL	2½"	A7518

LARGE "R" OPENING (HEAVY DUTY)

SUFFIX	SIZE	MILBANK NO.
F	3"	A8110
G	3½"	A8111
H	4"	A8112



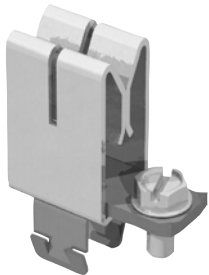
REMOVABLE HUB CLOSING PLATE

DESCRIPTION	SUFFIX	CAT. #
STANDARD (for -RL opening)	-XL	A7551
LARGE (for -R opening)	-X	S9064
ADAPTER (R to RL)	-RRL	S8324

HUB SUFFIX CHART

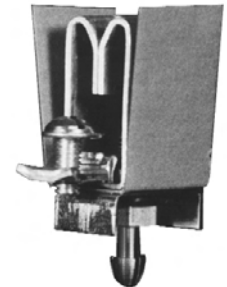
SUFFIX	DESCRIPTION	SUFFIX	SIZE	APPLICATION
O	Plain Top	WL	1"	For -RL Opening
RL	Small Hub Opening	YL	1¼"	For -RL Opening
R	Large Hub Opening	ZL	1½"	For -RL Opening
XL	Small Closing Plate	DL	2"	For -RL Opening
X	Large Closing Plate	EL	2½"	For -RL Opening
RXL	Large Hub Opening adapted to small Closing Plate	F	3"	For -R Opening
RRL	Large Hub Opening adapted to small Hub Opening	G	3½"	For -R Opening
		H	4"	For -R Opening

5TH TERMINAL



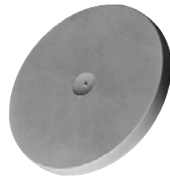
K5T FIFTH TERMINAL
(new style block with square hole)

5TH TERMINAL

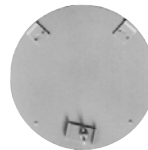


"PLUG-IN" FIFTH TERMINAL 5T8K2

CLOSING COVERS



METER CLOSING PLATE
(Gray Plastic)
6003



METAL CLOSING PLATE
(For ringless sockets)
CP-21

METER CLOSING PLATE
(Clear Plastic)
6116



K1540

SINGLE LUG ASSEMBLY

SUFFIX	CATALOG #	(3 per set) – 1 Ø
K1	K1539	350 kcmil (MAX)
K3	K1540	600 kcmil (MAX)
SUFFIX	CATALOG #	(4 per set) – 3 Ø
K5	K3082	350 kcmil (MAX)
K7	K3441	600 kcmil (MAX)



K1541

TWIN LUG ASSEMBLY

SUFFIX	CATALOG #	(3 per set) – 1 Ø
K2	K1350	350 kcmil (MAX)
K4	K1541	600 kcmil (MAX)
SUFFIX	CATALOG #	(4 per set) – 3 Ø
K6	K3442	350 kcmil (MAX)
K8	K3083	600 kcmil (MAX)

Utility requirements for this equipment may vary. Always consult the serving utility for their requirements before ordering or installing equipment in this catalog.

TYPE	CONDUCTOR SIZE AWG, MCM	CONDUIT TRADE SIZES (INCHES)									
		1/2	3/4	1	1 1/4	1 1/2	2	2 1/2	3	3 1/2	4
RHW & RHH (without outer covering) THW	14	6	10	16	29	40	65	93	143	192	163 85
	12	4	8	13	24	32	53	76	117	157	
	10	4	6	11	19	26	43	61	95	127	
	8	1	3	5	10	13	22	32	49	66	
	6	1	2	3	7	10	16	23	36	48	
	3	1	1	2	4	6	10	15	23	31	40
TW THW FEPB (6 thru 2), RHW and RHH (without outer covering) RH, THHW	1/0		1	1	2	3	5	8	12	16	21
	2/0		1	1	1	3	5	7	10	14	18
	3/0		1	1	1	2	4	6	9	12	15
	4/0			1	1	1	3	5	7	10	13
	250			1	1	1	2	4	6	8	10
	300			1	1	1	2	3	5	7	9
	350				1	1	1	3	4	6	8
	400				1	1	1	2	4	5	7
	500				1	1	1	1	3	4	6
	600					1	1	1	3	4	5
	700					1	1	1	2	3	4
	750					1	1	1	2	3	4

*This table is for concentric stranded conductors only. For cables with compact conductors refer to N.E.C.

*** ALLOWABLE AMPACITIES OF INSULATED COPPER & ALUMINUM CONDUCTORS (3W IN CONDUIT) 75°C(167°F)**

*CU		AL or Cu-Clad AL	
A	B	A	C
18	—	—	—
16	—	—	—
14	20†	—	—
12	25†	12	20†
10	35†	10	30†
8	50	8	40
6	65	6	50
4	85	4	65
3	100	3	75
2	115	2	90
1	130	1	100
1/0	150	1/0	120
2/0	175	2/0	135
3/0	200	3/0	155
4/0	230	4/0	180
250	255	250	205
300	285	300	230
350	310	350	250
400	335	400	270
500	380	500	310
600	420	600	340
700	460	700	375
750	475	750	385

A = Size: AWG/MCM
B = Ampere Rating for Insulation Types:
FEPW, RH, RHW, THW, THWN, XHHW, USE, 2W.
C = Ampere Rating for Insulation Types:
RH, RHW, THW, THWN, XHHW, USE
(Per NEC table 310-16)

AMPACITY CORRECTION FACTORS

AMBIENT TEMP. C°	CORRECTION FACTOR	AMBIENT TEMP. F°
21 - 25	1.05	70 - 77
26 - 30	1.00	79 - 86
31 - 35	.94	88 - 95
36 - 40	.88	97 - 104
41 - 45	.82	106 - 113
46 - 50	.75	115 - 122
51 - 55	.67	124 - 131
56 - 60	.58	133 - 140
61 - 65	.33	142 - 158
66 - 70	—	160 - 176

Overall ampere ratings of U/L listed Milbank multiple position meter sockets are based on **1993 N.E.C. Manual article 220-32** and **ANSI / UL-414** (except where restricted by line connector size.) These requirements provide for a diversity factor / demand factor being utilized in determining the overall (main bus / lug) rating of a gang socket. All Milbank U/L listed gang sockets meet or exceed these diversity factor/demand factor requirements. Standard overall ampacity ratings for U/L listed and non U/L listed gang sockets are as shown in the chart below. Ampere ratings of meter sockets are based on the meter socket being wired with 75° C insulated wire conductor, sized in accordance with **Table 310-16** of the **National Electric Code**.

GANG SOCKET OVERALL AMPACITIES

NO. OF METER POSITIONS	100A / POS. AMPACITY	125A / POS. AMPACITY	150A / POS. AMPACITY	200A / POS. AMPACITY
2	200A	200A	200A	200A
3	200A	225A	225A	270A
4	200A	250A	270A	360A
5	225A	285A	338A	450A
6	270A	330A	396A	528A

† Unless otherwise permitted elsewhere in the Code, the overcurrent protection for conductor types marked with an obelisk (†) shall not exceed 15 amps for 14 AWG, 20 amps for 12 AWG, and 30 amps for 10 AWG copper: or 15 amps for 12 AWG and 25 amps for 10 AWG aluminum and copper-clad aluminum after any correction factors for ambient temperature and number of conductors have been applied.