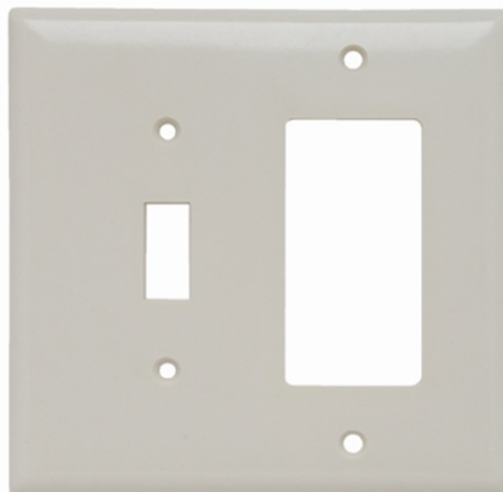


Combination Openings, 1 Toggle Switch & 1 Decorator, Two Gang, Light Almond

SPJ126LA



Smooth Wall Plate Junior-Jumbo 1gang
Toggle 1gang Decorator Light Almond



features & benefits

- Molded of non-combustible mar-proof material.
- Available in "SP" series in Standard, Junior-Jumbo, and Jumbo sizes.
- Seven standard colors available -- Ivory, White, Brown, Gray, Black, Red, and Light Almond.
- Individually wrapped with color-matching screws.
- Resistant to discoloration, grease, oil, solvent, and moisture.
- Nominal thickness, .070 inch.

specifications

General Info

Color: Light Almond
Size: Junior Jumbo
Type: Combination
Style: Decorator

Listing Agencies/Third Party Information

CSA Listing Info: Yes
CUL Listing No: No
cULus: No
cURus: No
Federal Spec: No
UL Listing No: Yes
UN SPS C: 39121704

UR: No

Dimensions

Weight: 0.10828

Technical Information

Material: Thermoset Plastic

Buy American Act Compliance

Country of Origin: MEXICO

Buy American Act Status: Trade Agreement Act Compliant