



Builder's Best, Inc.
 201 Broiles Drive
 Jacksonville, TX 75766
 903-586-8283
 sales@buildersbest.com
 BuildersBest.com

Galvanized Roof Vent - Black GRV820 & GRV824

012635



012636



012633



012634



DESCRIPTION

The GRV is a heavy duty Galvanized Roof Vent hood with a black powder coat finish.

PRODUCT FEATURES

- Riveted construction, no caulk
- Draw-formed base

PRODUCT SPECIFICATIONS

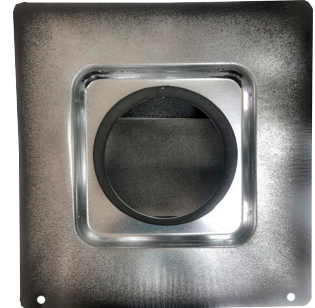
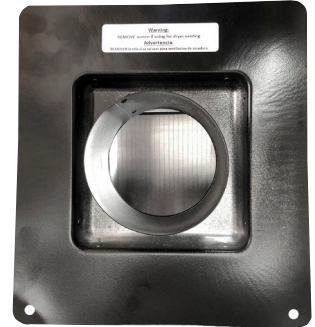
- 26 gauge galvanized steel with high performance polyester powder coated finish
- Flapper

DIMENSIONS & TESTING

- Dimensions on page 2
- ASTM testing on page 2 shows superior resistance to corrosion when compared to leading and foreign brands.

RECOMMENDATION

Recommended for 4/12 roof pitch and steeper.
 Not recommended for flat roofs.



Part Numbers GRV820 Flapper, No Screen

Dia.	Tail	Flapper	Screen	Each #	Qty	Case #	Package	Labeled	UPC#
4"	flush	flapper	n/a	12642	1	012642	Ind. Box	•	722048126428
4"	with collar	flapper	n/a	12643	1	012643	Ind. Box	•	722048126435

Part Numbers GRV824 Flapper with 1/4" Screen

Dia.	Tail	Flapper	Screen	Each #	Qty	Case #	Package	Labeled	UPC#
4"	with collar	flapper	¼"x¼" removable	12635	1	012635	Ind. Box	•	722048126350
4"	with collar	flapper	¼"x¼" removable	12645	1	012645	Display Box	•	722048126459
4"	flush	flapper	¼"x¼" removable	12636	1	012636	Ind. Box	•	722048126367
4"	flush	flapper	¼"x¼" removable	12646	1	012646	Display Box	•	722048126466
6"	flush	flapper	¼"x¼" removable	12632	1	012632	Ind. Box	•	722048126329
6"	with collar	flapper	¼"x¼" removable	12633	1	012633	Ind. Box	•	722048126336
7"	with collar	flapper	¼"x¼" removable	12639	1	012639	Ind. Box	•	722048126398
6"-8" (3¼"x10")	flush	flapper	¼"x¼" removable	12634	1	012634	Ind. Box	•	722048126343
10"	flush	flapper	¼"x¼" removable	12638	1	012638	Ind. Box	•	722048126381

Kit 012640 includes: Roof Cap, 4" x 8' UL181 Foil Duct, one 3-4" plastic increaser/reducer, two Zip Torq™ clamps

4"	with collar	flapper	¼"x¼" removable	12640	1	012640	Display Box	•	722048126404
----	-------------	---------	-----------------	-------	---	--------	-------------	---	--------------

Label



Warranty

Complete Warranty Statement at <https://www.buildersbest.com>

Hood Roof GRV820 GRV824 black spec sheet V18 3/22/24



Builder's Best, Inc.
 201 Broiles Drive
 Jacksonville, TX 75766
 903-586-8283
 sales@buildersbest.com
 BuildersBest.com

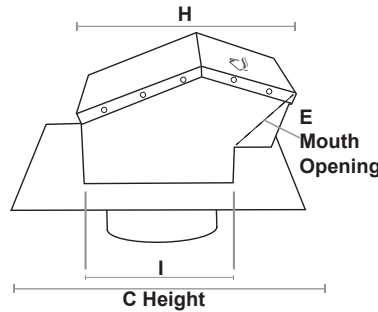
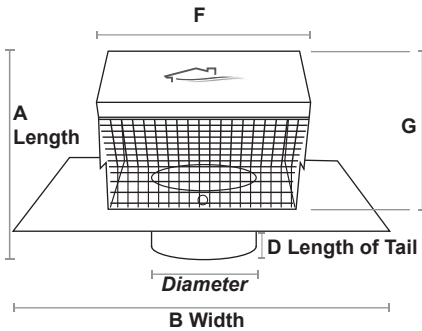
GRV820 & GRV824 Galvanized Black Metal Roof Cap

(PNs and Specs on reverse)

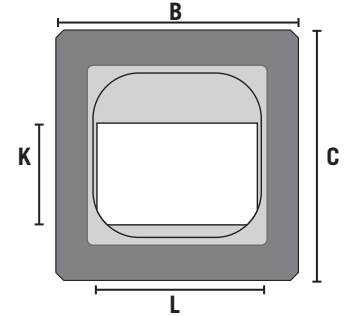
Dimensions (in inches)

Diameter	Collar or Opening:	A	B	C	D	E	F	G	H	I	K	L	collar
4"	flush	4.75	10	11	n/a	3	6	4.75	8.5	6.125	n/a	n/a	n/a
4"	collar	7.25	10	11	2.375	3	6	4.75	8.5	6.125	n/a	n/a	3.375
6"	flush	7	14	14.4375	n/a	4.75	8.5	7	12.375	8.5	n/a	n/a	n/a
6"	collar	9.5	14	14.4375	1.75	4.75	8.5	7	12.375	8.5	n/a	n/a	2.875
7"	collar	9.5	14	14.4375	1.75	4.75	8.5	7	12.375	11	n/a	n/a	2.875
*	PN 12634 (6-8")	7	15.675	16	n/a	4.75	11.625	7	15.5	11.5	6.5	10.25	n/a
**	PN 12638 (10")	7	15.675	16	n/a	4.75	11.625	7	15.5	15.5	10.75	10.75	n/a

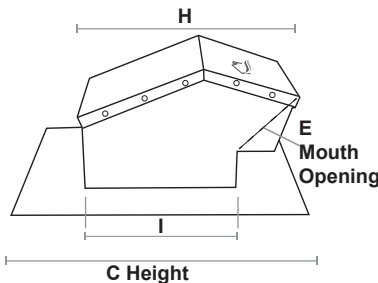
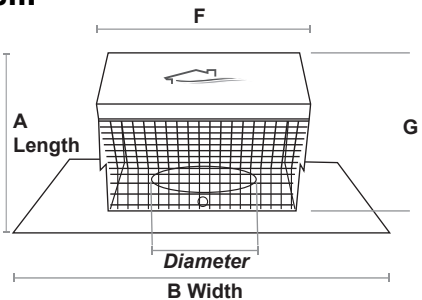
Collar:



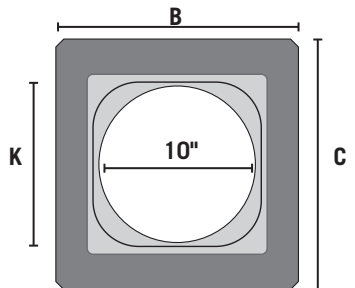
* PN 012634 Draw formed base:



Flush:



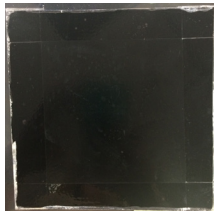
**PN 012638 Draw formed base:



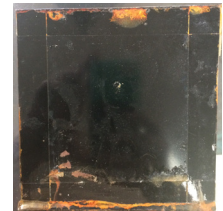
Results of ASTM B117:

The three images are the results of supplementary standardized testing on the Builder's Best Black Metal Roof Cap. Anti-corrosion properties have been tested by means of a salt test. The ASTM B117 is a standardized test method where metal pieces with different coatings are placed in a conditioned test chamber. Subsequently, they were sprayed for 480 hours (20 days) with a sodium chloride solution. This accelerates the corrosion process, which allows rapid insight into the performance of the coating. Tests were conducted by a third party lab.

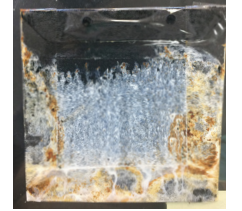
Builder's Best coated galvanized steel



Leading Brand painted cold rolled steel



Foreign brand painted galvanized steel



Builder's Best black metal roof caps begin with galvanized steel which has some corrosion protection. Our high performance polyester powder coating showed very little corrosion. The leading brand uses cold rolled steel, which has no corrosion protection. Their paint coat showed some corrosion. Competitor X uses galvanized steel, which has some corrosion protection, however, the paint they used failed.