



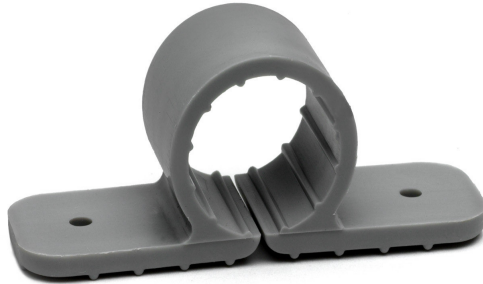
4700 W. 160th St.
Cleveland, OH 44135
PH: 800-321-9532
FX: 800-321-9535
www.oatey.com

TECHNICAL SPECIFICATION

STANDARD PIPE CLAMPS



TECHNICAL SPECIFICATION: Oatey Standard Pipe Clamps provide fast and easy installation of all types of copper tube sized and drain, waste and vent sized piping. Standard Pipe Clamps are designed to permit quick pipe cooling and reduce water noise. The design allows the piping to be flush mounted to the wall and joists. Standard Pipe Clamps can be used with hydronic heating systems.



APPROVALS AND LISTINGS



IAPMO Listed

PHYSICAL/CHEMICAL PROPERTIES

Material Polypropylene
Color Gray

DIRECTIONS FOR USE

Open clamp and snap over pipe or tube. Slide into position and secure with barbed nail or screw. Check with local codes to ensure proper spacing requirements for piping support. NOTE: When using with DWV or Galvanized piping, use the next larger clamp size than the pipe.

PRECAUTIONS

Read cautions and directions on packaging carefully before using this product. KEEP OUT OF REACH OF CHILDREN.

COMMON APPLICATIONS

Standard Pipe Clamps provide fast and easy installation and support for all types of piping.

Consult Oatey Technical Department for applications not specifically referenced above.

PRODUCT NUMBER	DESCRIPTION	PACK	CARTON WEIGHT
33916	1/2" Standard Pipe Clamp (6 per bag)	6 bags	2 lbs.
33940	1/2" Standard Pipe Clamp (100 per bag)	500	5 lbs.
33917	3/4" Standard Pipe Clamp (6 per bag)	6 bags	2 lbs.
33941	3/4" Standard Pipe Clamp (100 per bag)	500	6 lbs.
33877	1" Standard Pipe Clamp (6 per bag)	6 bags	4 lbs.
33942	1" Standard Pipe Clamp (50 per bag)	250	4 lbs.
33943	1-1/4" Standard Pipe Clamp (25 per bag)	250	4 lbs.
33944	1-1/2" Standard Pipe Clamp (25 per bag)	250	10 lbs.
33946	2" Standard Pipe Clamp (25 per bag)	250	13 lbs.