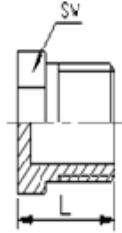


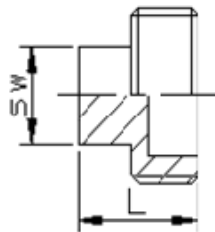
Hexagon Plug, Taper (Conical) Thread



inch

SIZE	L	SW
1/8"	0.67	0.47
1/4"	0.69	0.63
3/8"	0.71	0.79
1/2"	0.98	0.94
3/4"	1.02	1.18
1"	1.14	1.50
1-1/4"	1.38	1.81
1-1/2"	1.50	2.05
2"	1.54	2.56
2-1/2"	1.73	3.19
3"	2.13	3.74
4"	2.17	4.69

Square Plug



inch

SIZE	L	SW
1/8"	0.65	0.24X0.24
1/4"	0.79	0.35X0.35
3/8"	0.91	0.43X0.43
1/2"	0.98	0.51X0.51
3/4"	1.06	0.63X0.63
1"	1.26	0.79X0.79
1-1/4"	1.38	0.94X0.94
1-1/2"	1.42	0.98X0.98
2"	1.50	1.26X1.26
2-1/2"	1.89	1.65X1.65
3"	2.05	1.81X1.81
4"	2.44	2.28X2.28