



1-1/2" GRAB BARS WITH CONCEALED FLANGES, PEENED FINISH TECHNICAL SPECIFICATION

Job Name _____ Item # _____
 Location _____
 Engineer _____ Contractor _____
 PO # _____ Tag _____
 Representative _____

SPECIFICATIONS

Dearborn Brass Stainless Steel Grab Bars are designed for use in hospitals, hotels, government facilities, commercial building and residential home settings. ADA Compliant.

DESCRIPTION

- Satin Finish
- Bar 18 ga. 304 Stainless Steel
- Flange: 14 ga. 304 Stainless Steel
- Screws: #10 x 2" Self Tapping Stainless Steel

APPROVALS AND LISTINGS

ASTM F 446 with 1-1/2" clearance
 ANSI A117.1

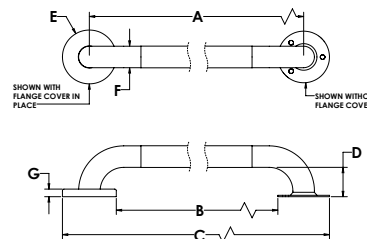
PRODUCT SELECTOR

1-1/2" GRAB BARS WITH CONCEALED FLANGES PEENED FINISH				
✓	Product Number	Size	Description	Carton Quantity
	DB8918P	1-1/2" x 18"	Stainless Steel Grab Bar w/ Concealed Flange, Peened Finish	4
	DB8924P	1-1/2" x 24"	Stainless Steel Grab Bar w/ Concealed Flange, Peened Finish	4
	DB8932P	1-1/2" x 32"	Stainless Steel Grab Bar w/ Concealed Flange, Peened Finish	4
	DB8936P	1-1/2" x 36"	Stainless Steel Grab Bar w/ Concealed Flange, Peened Finish	4
	DB8942P	1-1/2" x 42"	Stainless Steel Grab Bar w/ Concealed Flange, Peened Finish	4
	DB8948P	1-1/2" x 48"	Stainless Steel Grab Bar w/ Concealed Flange, Peened Finish	4

Data is subject to manufacturing tolerances.

DIMENSIONS

[A]:	Length A	See Chart A.1	[E]	Diameter E	3"
[B]:	Length B	See Chart A.1	[F]	Diameter F	1.5"
[C]:	Length C	See Chart A.1	[G]	Cover Height G	0.44"
[D]	Height D	1.75"			



A.1 - LENGTHS						
	Size 1-1/2" x 18"	Size 1-1/2" x 24"	Size 1-1/2" x 32"	Size 1-1/2" x 36"	Size 1-1/2" x 42"	Size 1-1/2" x 48"
Length A	18"	24"	32"	36"	42"	48"
Length B	15"	21"	29"	33"	39"	45"
Length C	21"	27"	5"	39"	45"	51"

Access BIM/Revit content through www.oatey.com