

TECHNICAL DATA SHEET - INTERACTIVE PDF

Conduit bodies, LL, LR, and LRL-style

For rigid and IMC conduit

redodotTM



01



02

01 LL-style without cover and gasket

02 LL-style with cover and gasket

*LL shown LR opposite

Features & Benefits:

- Precision-cast and machined surfaces permit safer wire pulling
- Clean cover edges provide good gasket sealing
- Trade sizes ½" to 2" NPT threaded hubs
- Trade sizes 2½" to 4" NPSM threaded hubs
- For use with rigid or IMC conduit
- Retained deep-slotted stainless steel cover screws for faster installation
- Clear UL, CSA, cULus and cubic content markings help speed approval by inspectors

Applications:

- Connect conduit sections
- Act as pull outlets when conductors are being installed
- Provides easy access for splices in branch conductors
- Makes 90° bends in conduit runs
- Provide access to wiring for maintenance and potential for future changes

LL, LR, and LRL-style conduit bodies allow 90° bends in conduit runs and provide easier access to wiring.

Certifications / Standards:



3-Part Specification: 26 05 33.52

Tools and Calculators

Conforms to:

- UL 514B
 - UL File: E28688
- CSA C22.2 No.18
 - CSA File: 16807

Material

- Conduit body: Die cast aluminum alloy, sand cast aluminum alloy (where indicated)
- Gasket: Neoprene
- Cover: Stamped aluminum alloy
- Screws: Zinc-plated low carbon steel
- Finish: Powder coated

Table data:

- [Product selection and dimensions](#)

LL-Style conduit bodies

Product selection and dimensions - inches

Part no. (Includes cover and gasket)	Part no. (Without cover and gasket)	Hub Size	A	B	C	Volume (in ³)
DALL-1-CG*	ALL-1*	½"	4.39	1.90	1.35	4.3
DALL-2-CG*	ALL-2*	¾"	5.17	2.22	1.54	7.3
DALL-3-CG*	ALL-3*	1"	5.92	2.48	1.91	12.3
DALL-4-CG*	ALL-4*	1 ¼"	7.76	3.41	2.48	35.8
DALL-5-CG*	ALL-5*	1 ½"	7.76	3.41	2.68	35.8
DALL-6-CG*	ALL-6*	2"	9.85	4.01	3.27	69.8
DALL-7-CG*	-	2 ½"	12.68	6.00	4.02	153
DALL-7-CG*	-	2 ½"	12.68	6.00	4.02	153
ALL-8*	-	3"	13.12	5.96	4.66	182.5
DALL-8-CG*	-	3"	13.12	5.96	4.66	182.5
ALL-9*	-	3 ½"	15.46	6.40	5.43	304.8
DALL-9-CG*	-	3 ½"	15.46	6.40	5.43	304.8
ALL-10*	-	4"	15.46	6.40	5.51	308
DALL-10-CG*	-	4"	15.46	6.40	5.51	308

Note: Product must be installed in accordance with applicable national and local electrical codes.

* cULus listed only

* Sand cast aluminum body

LR-Style conduit bodies

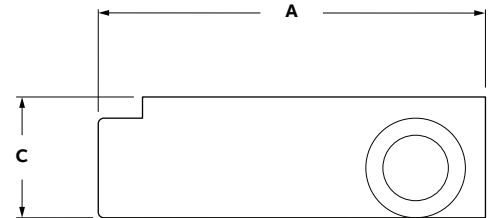
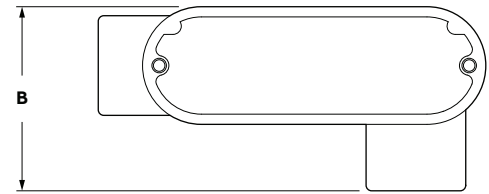
Product selection and dimensions - inches

Part no. (Includes cover and gasket)	Part no. (Without cover and gasket)	Hub Size	A	B	C	Volume (in ³)
DALR-1-CG*	ALR-1*	½"	4.39	1.90	1.35	4.3
DALR-2-CG*	ALR-2*	¾"	5.17	2.22	1.54	7.3
DALR-3-CG*	ALR-3*	1"	5.92	2.48	1.91	12.3
DALR-4-CG*	ALR-4*	1 ¼"	7.76	3.41	2.48	35.8
DALR-5-CG*	ALR-5*	1 ½"	7.76	3.41	2.68	35.8
DALR-6-CG*	ALR-6*	2"	9.85	4.05	3.27	69.8
ALR-7*	-	2 ½"	13.08	6.00	4.02	153
DALR-7-CG*	-	2 ½"	13.08	6.00	4.02	153
ALR-8*	-	3"	13.12	5.96	4.66	182.5
DALR-8-CG*	-	3"	13.12	5.96	4.66	182.5
ALR-9*	-	3 ½"	15.46	6.40	5.43	304.8
DALR-9-CG*	-	3 ½"	15.46	6.40	5.43	304.8
ALR-10*	-	4"	15.46	6.40	5.51	308
DALR-10-CG*	-	4"	15.46	6.40	5.51	308

Note: Product must be installed in accordance with applicable national and local electrical codes.

* cULus listed only

* Sand cast aluminum body



*LL shown LR opposite

LRL- Style conduit bodies, left and right opening

Product selection and dimensions - inches

Part no. (Includes cover and gasket)	Hub Size	A	B	C	Volume (in ³)
ALRL-1	½"	4.40	2.07	1.42	4.3
ALRL-2	¾"	5.08	2.28	1.65	7.3
ALRL-3	1"	5.80	2.48	1.91	12.2

Note: Product must be installed in accordance with applicable national and local electrical codes.

